

A close-up photograph of a person's hand working on a car engine. The hand is positioned on a black cylindrical component, possibly a sensor or part of a cooling system. The background shows various engine parts, hoses, and a spark plug, all slightly out of focus. The lighting is bright, highlighting the textures of the metal and plastic parts.

**MAGNETI
MARELLI**

PARTS & SERVICES

ENGINE **COOLING** AND
CABIN **COMFORT** SYSTEMS

ENGINE RADIATOR

The radiator is the main component of the cooling system. It is an air-liquid exchanger that has the task of releasing the heat collected by the coolant in the various parts of the engine into the atmosphere.

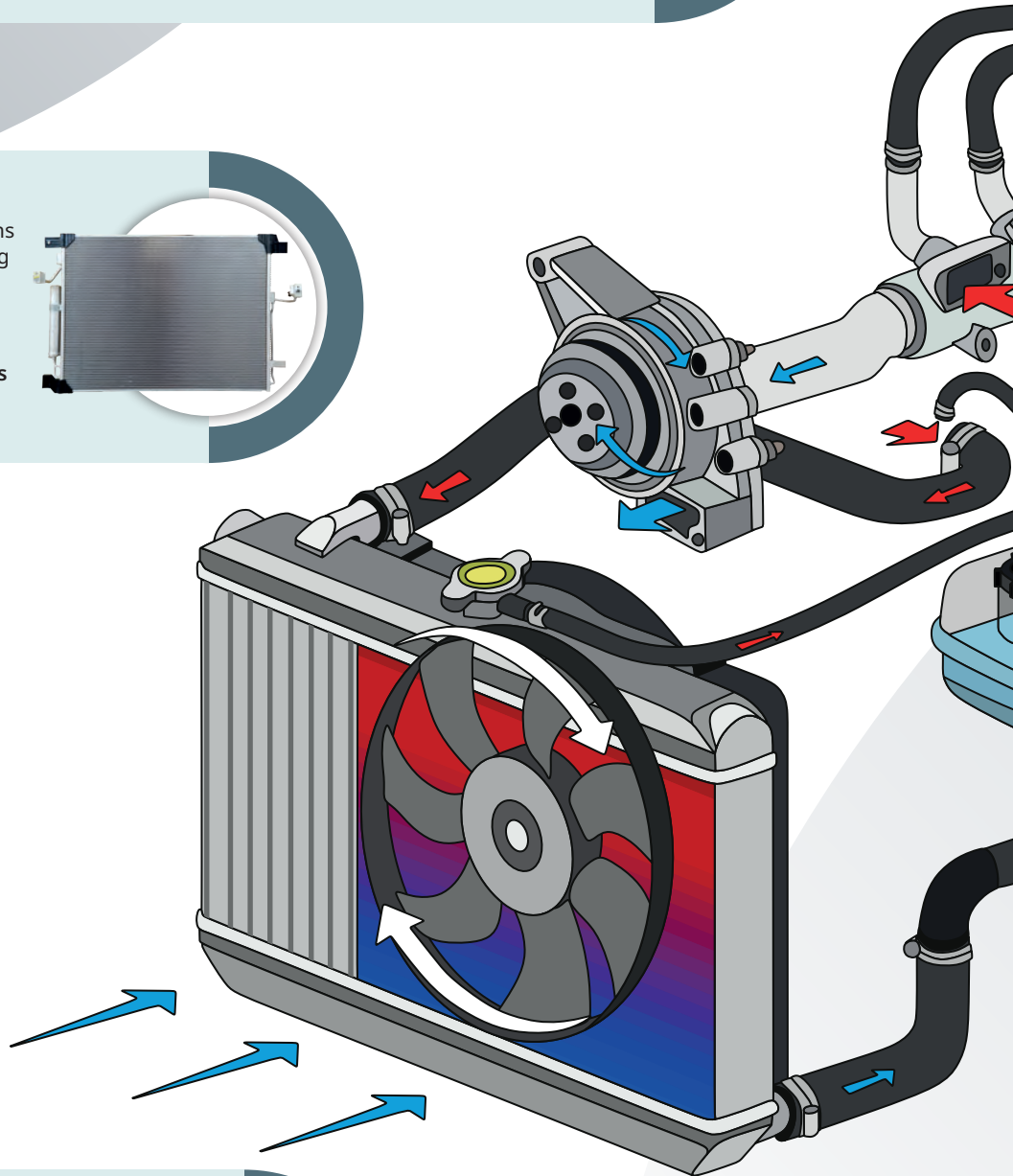
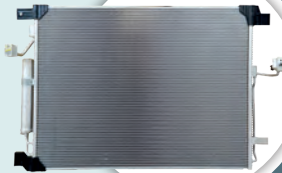
The Magneti Marelli Parts & Services range includes more than 400 products for a wide coverage of the registered vehicles.



CONDENSER

The condenser is an exchanger that aims to restore the gas of the air conditioning system to a liquid state. It is located near the radiator, in the front part of the car hood.

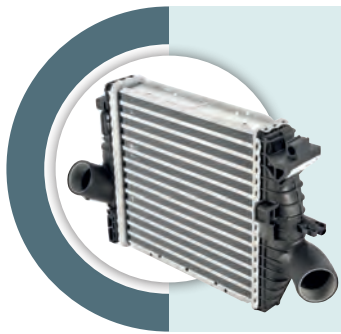
Magneti Marelli Parts & Services offers a wide range of over 230 products for most of the registered vehicles.



RADIATOR FAN

The fan, usually placed behind the radiator, in some cases can be found in the front side. This component increases the thermic exchange, especially in case of slow speed or parking. The fan is activated if necessary; the pressure of the air conditioning system and/or the refrigerant fluid temperature is checked by sensors.

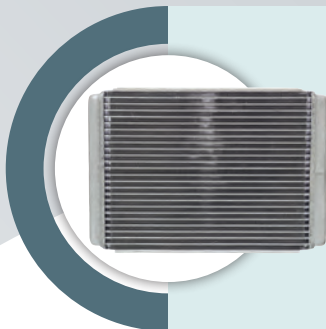
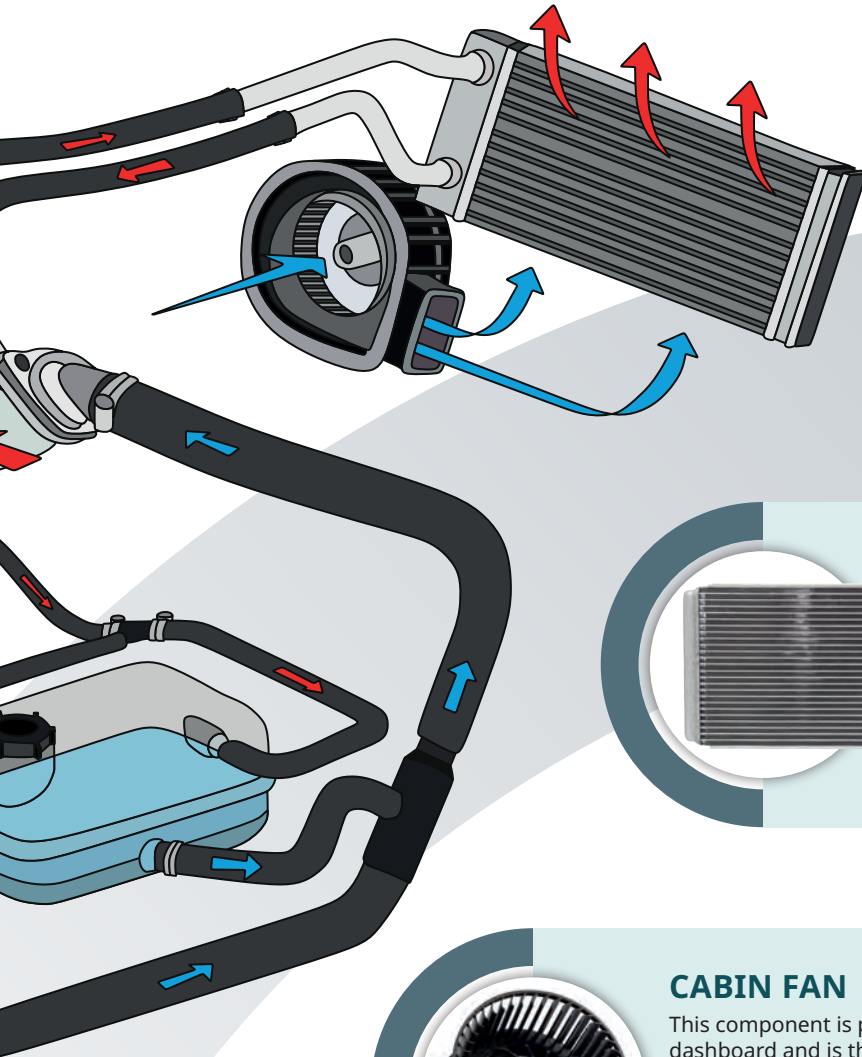




INTERCOOLER

The intercooler is an air-to-air exchanger positioned near the radiator, usually below it. This exchanger cools the air coming from the compressor to fully exploit the potential of supercharging. Cooler (and therefore denser) air results in better performance and lower fuel consumption, therefore less pollution.

The Magneti Marelli Parts & Services Intercooler range includes the most important applications for a total of 135 references.



HEATER

The heater is an air-liquid exchanger which, by exploiting the heat collected by the refrigerating fluid, heats the air before being introduced into the passenger cab. Thanks to this small radiator, car comfort is guaranteed in the cold months.

Magneti Marelli Parts & Services offers a range of 105 products for most automotive applications.



CABIN FAN

This component is positioned behind the dashboard and is the heart of car comfort. It has the task of "blowing" air into the passenger compartment. The air flow, after being suitably cooled or heated, is directed to the air vents.

Magneti Marelli Parts & Services offers an important range of 220 products.



THERMOSTAT

Mechanical, electrical and lately also electronically controlled, these small components allow to maintain the optimum operating temperature of the engine.

Magneti Marelli Parts & Services offers a renewed range of over 300 codes for a broad coverage of the car park.

Water pump



A properly working water pump ensures that engine coolant fluid flows correctly into the cooling system.

**450
REF.**

Magneti Marelli Parts & Services water pumps, a range of 450 ref. in constant evolution, offer superior cooling performance and longer life.

**100%
QUALITY**

100% tested and quality guaranteed, they are equipped with all components (bearings, impellers, etc.) with same quality of OE parts to ensure an excellent result: perfect applicability and long life.



099990222012 - © Magneti Marelli Parts & Services 2021 - 8 435034 953480

